



Test Report

No.: GZ1105055978/CHEM

Date: MAY 12, 2011

Page 1 of 6

TIANSHUI HUATIAN TECHNOLOGY CO., LTD
NO.14, SHUANGQIAO ROAD, QINZHOU AREA, TIANSHUI CITY, GANSU PROVINCE

The following sample(s) was/were submitted and identified on behalf of the applicant as SOP16L

SGS Job No. : GZ13106357EC
SGS Internal Reference No. : 2.1
Client Reference Information : USED FOR SOP6L/SOP7L/SOP8L/ESOP8L/SOP14L/
SOP16L/ESOP16L/SOP16L(W)/SOP18L/SOP20L/
SOP24L/SOP28L/SOP30L/HSOP28L/HSOP34L/MSOP8L/
MSOP10L/EMSOP8L/EMSOP10L
Date of Sample Received : MAY 09, 2011
Testing Period : MAY 09, 2011 TO MAY 12, 2011

Test Requested : Selected test (s) as requested by client.

Test Method : Please refer to next page(s).

Test Result(s) : Please refer to next page(s).

Signed for and on behalf of
SGS-CSTC Ltd.

Manson Yang
Approved Signatory

This document is issued by the Company under its General Conditions of Service printed overleaf or available on request and accessible at http://www.sgs.com/terms_and_conditions.htm. Attention is drawn to the limitation of liability, indemnification and jurisdiction issues defined therein. Any holder of this document is advised that information contained hereon reflects the Company's findings at the time of its intervention only and within the limits of Client's instructions, if any. The Company's sole responsibility is to its Client and this document does not generate parties to a transaction from exercising all their rights and obligations under the transaction documents. Any unauthorized alteration, forgery or falsification of the content or appearance of this document is unlawful and offenders may be prosecuted to the fullest extent of the law.
Unless otherwise stated, the results shown in this test report refer only to the sample(s) tested. This document cannot be reproduced except in full, without prior approval of the Company.



SGS Standards Technical Service Co., Ltd
Guangzhou Testing Services Center Chemical Laboratory

198 Kazhu Road, Sointech Park, Guangzhou Economic & Technology Development District, Guangzhou, China 510663 | (86-20) 82155555 | (86-20) 82075125 | www.cn.sgs.com
中国·广州·经济技术开发区科学城科珠路198号 邮编: 510663 | (86-20) 82155555 | (86-20) 82075125 | sgs.china@sgs.com

Member of the SGS Group (SGS SA)



Test Report

No.: GZ1105055978/CHEM

Date: MAY 12, 2011

Page 2 of 6

Test Results:

Description for specimen 1 : Black body w/ gray printing & silvery metal pin (mixed)

Elementary Analysis

Test Item(s)	Unit	Test Method (Reference)	Result	MDL
Cadmium (Cd)	mg/kg	IEC 62321: 2008, ICP-OES	N.D.	2
Lead (Pb)	mg/kg	IEC 62321: 2008, ICP-OES	N.D.	2
Mercury (Hg)	mg/kg	IEC 62321: 2008, ICP-OES	N.D.	2
Hexavalent Chromium (CrVI) by alkaline extraction	mg/kg	IEC 62321: 2008, UV-Vis	N.D.	2

Note:

1. mg/kg = ppm
2. N.D. = Not Detected (< MDL)
3. MDL = Method Detection Limit

Flame Retardants

Test Item(s)	Unit	Test Method (Reference)	Result	MDL
Sum of PBBs	mg/kg	-	N.D.	-
Monobromobiphenyl	mg/kg	IEC 62321: 2008, GC-MS	N.D.	5
Dibromobiphenyl	mg/kg	IEC 62321: 2008, GC-MS	N.D.	5
Tribromobiphenyl	mg/kg	IEC 62321: 2008, GC-MS	N.D.	5
Tetrabromobiphenyl	mg/kg	IEC 62321: 2008, GC-MS	N.D.	5
Pentabromobiphenyl	mg/kg	IEC 62321: 2008, GC-MS	N.D.	5
Hexabromobiphenyl	mg/kg	IEC 62321: 2008, GC-MS	N.D.	5
Heptabromobiphenyl	mg/kg	IEC 62321: 2008, GC-MS	N.D.	5
Octabromobiphenyl	mg/kg	IEC 62321: 2008, GC-MS	N.D.	5
Nonabromobiphenyl	mg/kg	IEC 62321: 2008, GC-MS	N.D.	5
Decabromobiphenyl	mg/kg	IEC 62321: 2008, GC-MS	N.D.	5
Sum of PBDEs	mg/kg	-	N.D.	-
Monobromodiphenyl ether	mg/kg	IEC 62321: 2008, GC-MS	N.D.	5
Dibromodiphenyl ether	mg/kg	IEC 62321: 2008, GC-MS	N.D.	5
Tribromodiphenyl ether	mg/kg	IEC 62321: 2008, GC-MS	N.D.	5
Tetrabromodiphenyl ether	mg/kg	IEC 62321: 2008, GC-MS	N.D.	5
Pentabromodiphenyl ether	mg/kg	IEC 62321: 2008, GC-MS	N.D.	5
Hexabromodiphenyl ether	mg/kg	IEC 62321: 2008, GC-MS	N.D.	5
Heptabromodiphenyl ether	mg/kg	IEC 62321: 2008, GC-MS	N.D.	5
Octabromodiphenyl ether	mg/kg	IEC 62321: 2008, GC-MS	N.D.	5
Nonabromodiphenyl ether	mg/kg	IEC 62321: 2008, GC-MS	N.D.	5
Decabromodiphenyl ether	mg/kg	IEC 62321: 2008, GC-MS	N.D.	5

Note:

1. mg/kg = ppm
2. N.D. = Not Detected (< MDL)
3. MDL = Method Detection Limit
4. "-" = Not regulated

This document is issued by the Company under its General Conditions of Service printed overleaf or available on request and accessible at http://www.sgs.com/terms_and_conditions.htm. Attention is drawn to the limitation of liability, indemnification and jurisdiction issues defined therein. Any holder of this document is advised that information contained hereon reflects the Company's findings at the time of its intervention only and within the limits of Client's instructions, if any. The Company's sole responsibility is to its Client and this document does not generate parties to a transaction from exercising all their rights and obligations under the transaction documents. Any unauthorized alteration, forgery or falsification of the content or appearance of this document is unlawful and offenders may be prosecuted to the fullest extent of the law.

Unless otherwise stated, the results shown in this test report refer only to the sample(s) tested. This document cannot be reproduced except in full, without prior approval of the Company.



SGS Testing Services (China) Co., Ltd.
Guangzhou Testing Services Laboratory

138 Kazhu Road, Sointech Park, Guangzhou Economic & Technology Development District, Guangzhou, China 510663 | (86-20) 82155555 | (86-20) 82075125 | www.cn.sgs.com
中国·广州·经济技术开发区科学城科珠路138号 邮编: 510663 | (86-20) 82155555 | (86-20) 82075125 | sgs.china@sgs.com

Member of the SGS Group (SGS SA)



Test Report

No.: GZ1105055978/CHEM

Date: MAY 12, 2011

Page 3 of 6

Description for specimen 2 : Black body w/ gray (mixed)

PFOA & PFOS (Perfluorooctanoic acid & Perfluorooctane sulfonates)

Test Item(s)	Unit	Test Method (Reference)	Result	MDL
Perfluorooctanoic acid (PFOA)	mg/kg	EPA 3550C: 2007, LC-MS	N.D.	10
Perfluorooctane sulfonates (PFOS)				
PFOS – Acid	mg/kg	EPA 3550C: 2007, LC-MS	N.D.	10
PFOS – Metal Salt				
PFOS – Amide				

Note:

1. mg/kg = ppm
2. N.D. = Not Detected (< MDL)
3. MDL = Method Detection Limit

For reference: commission regulation (EU) No 757/2010 amending regulation (EC) No 850/2004:

(1) For the purposes of this entry, Article 4(1) (b) shall apply to concentrations of PFOS equal to or below 10 mg/kg (0,001 % by weight) when it occurs in substances or in preparations.

(2) For the purposes of this entry, Article 4(1) (b) shall apply to concentrations of PFOS in semi-finished products or articles, or parts thereof, if the concentration of PFOS is lower than 0,1 % by weight calculated with reference to the mass of structurally or micro-structurally distinct parts that contain PFOS or, for textiles or other coated materials, if the amount of PFOS is lower than 1µg /m² of the coated material.

Remark: The sample(s) was/were analyzed on behalf of the applicant as mixing sample in one testing. The above result(s) was/were only given as the informality value and only for reference.

This document is issued by the Company under its General Conditions of Service printed overleaf or available on request and accessible at http://www.sgs.com/terms_and_conditions.htm. Attention is drawn to the limitation of liability, indemnification and jurisdiction issues defined therein. Any holder of this document is advised that information contained hereon reflects the Company's findings at the time of its intervention only and within the limits of Client's instructions, if any. The Company's sole responsibility is to its Client and this document does not generate parties to a transaction from exercising all their rights and obligations under the transaction documents. Any unauthorized alteration, forgery or falsification of the content or appearance of this document is unlawful and offenders may be prosecuted to the fullest extent of the law.

Unless otherwise stated, the results shown in this test report refer only to the sample(s) tested. This document cannot be reproduced except in full, without prior approval of the Company.



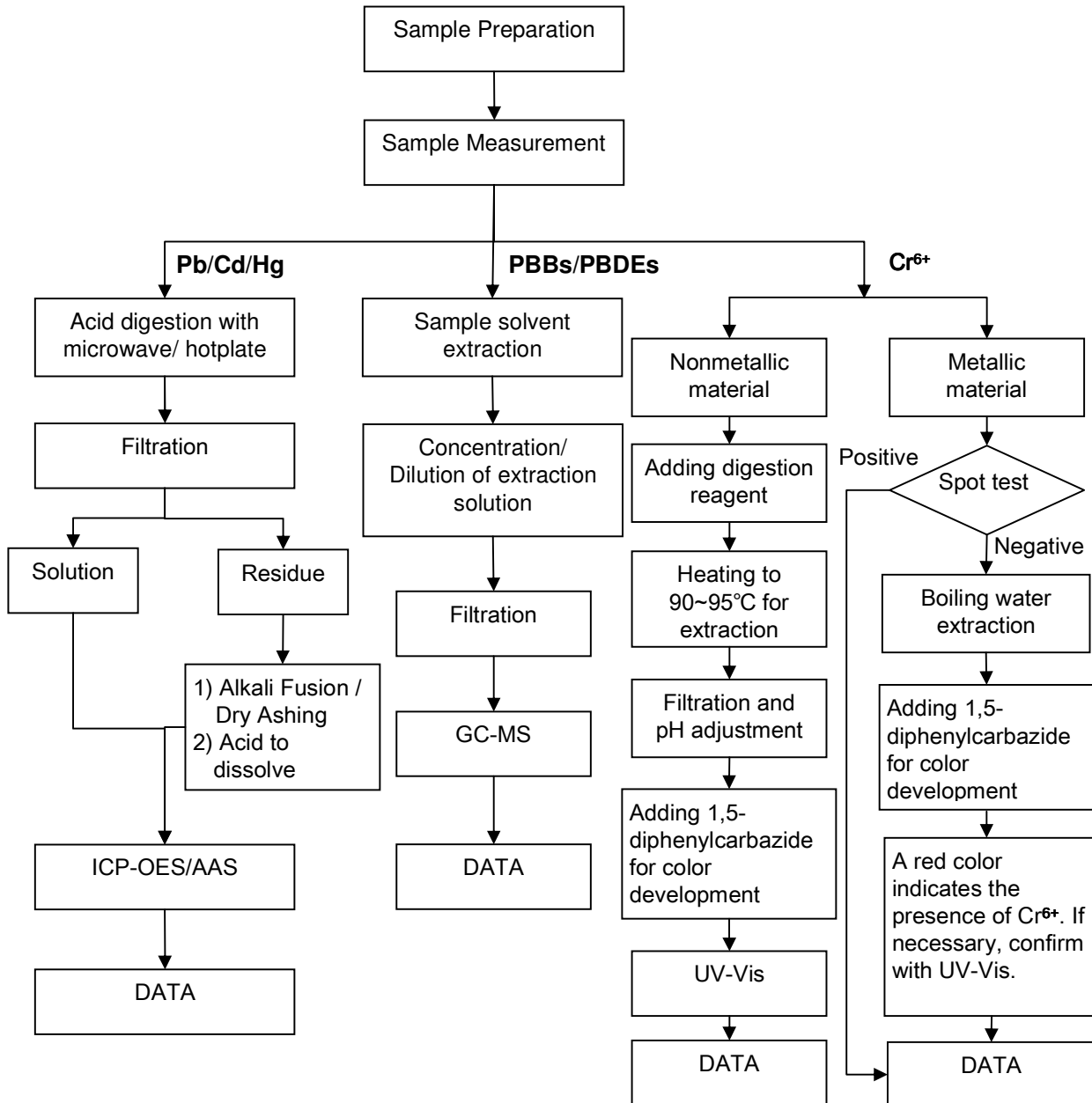
SGS Testing Services (China) Co., Ltd
Guangzhou Testing Services (China) Co., Ltd

198 Kazhu Road, Sointech Park, Guangzhou Economic & Technology Development District, Guangzhou, China 510663 | (86-20) 82155555 | (86-20) 82075125 | www.cn.sgs.com
中国·广州·经济技术开发区科学城科珠路198号 邮编: 510663 | (86-20) 82155555 | (86-20) 82075125 | sgs.china@sgs.com

ATTACHMENTS

RoHS Testing Flow Chart

- 1) Name of the person who made testing: Bella Wang / Cutey Yu / Ross Zhan
- 2) Name of the person in charge of testing: Adams Yu / Ryan Yang
- 3) These samples were dissolved totally by pre-conditioning method according to below flow chart (Cr6+ and PBBs/PBDEs test method excluded).



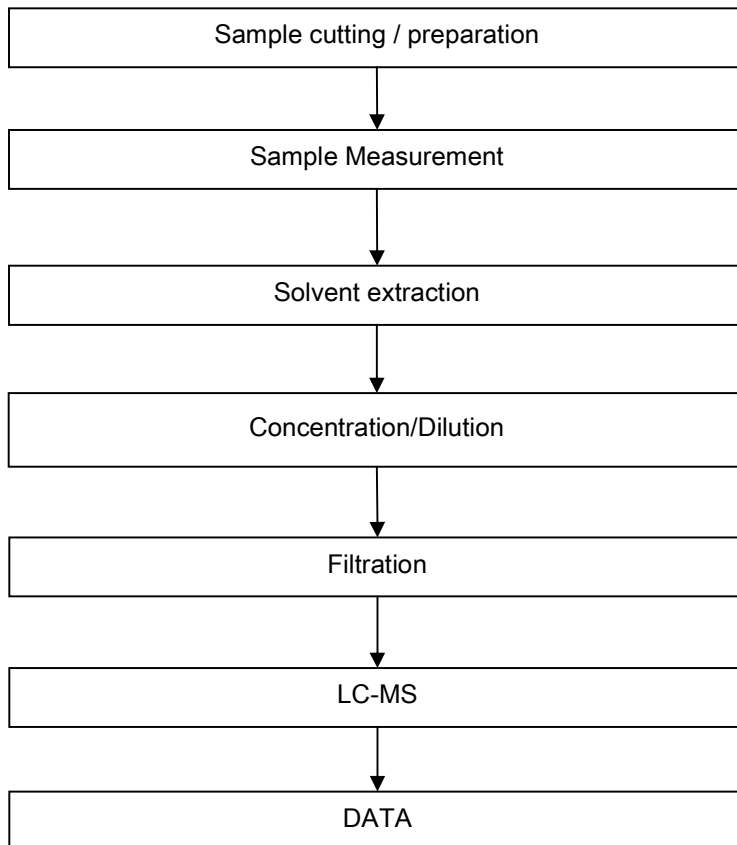
This document is issued by the Company under its General Conditions of Service printed overleaf or available on request and accessible at http://www.sgs.com/terms_and_conditions.htm. Attention is drawn to the limitation of liability, indemnification and jurisdiction issues defined therein. Any holder of this document is advised that information contained hereon reflects the Company's findings at the time of its intervention only and within the limits of Client's instructions, if any. The Company's sole responsibility is to its Client and this document does not generate parties to a transaction from exercising all their rights and obligations under the transaction documents. Any unauthorized alteration, forgery or falsification of the content or appearance of this document is unlawful and offenders may be prosecuted to the fullest extent of the law. Unless otherwise stated, the results shown in this test report refer only to the sample(s) tested. This document cannot be reproduced except in full, without prior approval of the Company.



ATTACHMENTS

PFOA / PFOS Testing Flow Chart

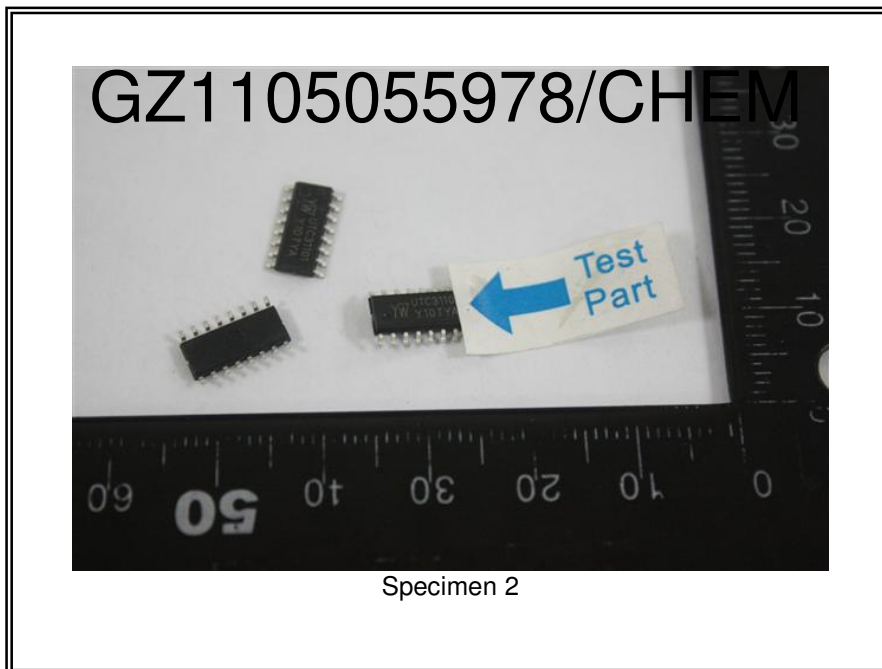
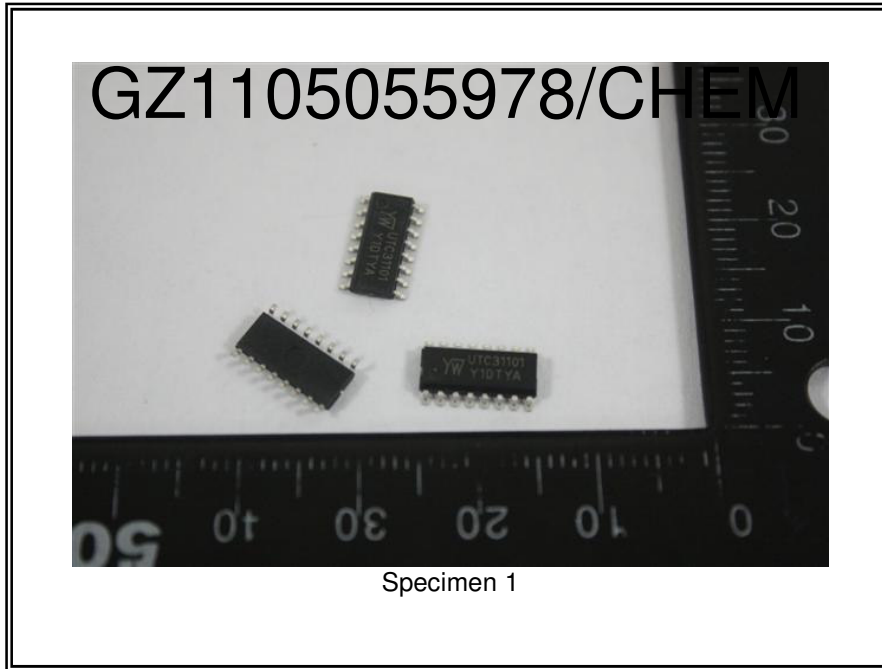
- 1) Name of the person who made testing: Cindy Huang
- 2) Name of the person in charge of testing: Ryan Yang



This document is issued by the Company under its General Conditions of Service printed overleaf or available on request and accessible at http://www.sgs.com/terms_and_conditions.htm. Attention is drawn to the limitation of liability, indemnification and jurisdiction issues defined therein. Any holder of this document is advised that information contained hereon reflects the Company's findings at the time of its intervention only and within the limits of Client's instructions, if any. The Company's sole responsibility is to its Client and this document does not generate parties to a transaction from exercising all their rights and obligations under the transaction documents. Any unauthorized alteration, forgery or falsification of the content or appearance of this document is unlawful and offenders may be prosecuted to the fullest extent of the law. Unless otherwise stated, the results shown in this test report refer only to the sample(s) tested. This document cannot be reproduced except in full, without prior approval of the Company.



Sample photo :



SGS authenticate the photo on original report only

*** End of Report ***

This document is issued by the Company under its General Conditions of Service printed overleaf or available on request and accessible at http://www.sgs.com/terms_and_conditions.htm. Attention is drawn to the limitation of liability, indemnification and jurisdiction issues defined therein. Any holder of this document is advised that information contained hereon reflects the Company's findings at the time of its intervention only and within the limits of Client's instructions, if any. The Company's sole responsibility is to its Client and this document does not generate parties to a transaction from exercising all their rights and obligations under the transaction documents. Any unauthorized alteration, forgery or falsification of the content or appearance of this document is unlawful and offenders may be prosecuted to the fullest extent of the law.

